

Application Information for Chinese Government Scholarship – High Level Postgraduate Program (2025)

Introduction

The Chinese Government Scholarship "High-level Graduate Student" Program is an educational initiative aimed at selecting and nurturing International students worldwide who possess excellent academic backgrounds, outstanding professional competencies, and substantial potential for future development. This program offers full scholarships, covering tuition fees, accommodation expenses, living costs, and comprehensive medical insurance (excluding international travel expenses).

Qualification

1. Applicants must be non-Chinese citizens;

2. Academic Background and age limit:

Applicants for a master's degree must have acquired their bachelor degrees, and should not be older than 35.

Applicants for a PhD degree must have acquired their master degrees, and should not be older than 40.

Application Period

Nov. 15, 2024 – Feb. 12, 2025

Programs

School/College/Dept.	Master's Specialty
School of Architecture	Architecture (Chinese/English)
	Urban Planning (Chinese/English)
	Landscape Architecture (Chinese/English)
School of Mechanical Engineering	Mechanical Engineering
School of Information Science & Engineering	Electronic and Information Engineering (English)
	Information & Communication Engineering
School of Civil Engineering	Mechanics (Chinese/English)

	Civil Engineering (Chinese/English)
	Civil engineering construction and management
	Intelligent Construction and Operation & Maintenance
	Management Science and Engineering
School of Electronic Science & Engineering	Optical Engineering
	Electronic Science and Technology (Chinese/English)
School of Automation	Control Science and Engineering (Chinese/English)
School of Computer Science & Engineering	Computer Science and Technology
	Software Engineering
School of Biological Science & Medical Engineering	Biological & Medical Engineering
School of Material Science and Engineering	Material Science & Engineering
School of Electrical Engineering	Electrical Engineering (Chinese/English)
School of Transportation	Transportation Surveying and Information Technology
	Transportation Engineering (Chinese/English)
School of Energy and Environment	Power Engineering and Engineering Thermophysics (Chinese/English)
	Environmental Science & Engineering (Chinese/English)
	Carbon Neutrality Science and Technology
School of Economics and Management	International Trade (English-taught)
	Applied Economics
	Management Science & Engineering
	Business Administration
School of Mathematics	Mathematics
School of Physics	Physics
School of Chemistry & Chemical Engineering	Chemical Engineering & Techniques
	Chemistry
School of Instrument Science & Engineering	Instrumental Science & Technology
	Electronic and Information Engineering (English-taught)
School of Law	Law
School of Life Science and Technology	Biology (Chinese/English)
School of Marxism	Marxist Theory
School of Humanities	Philosophy
School of Arts	Arts
School of Integrated circuit	Integrated Circuit Science and Engineering
School of Cyber Science and Engineering	Cyberspace Security
Medical School	Basic Medicine
	Clinical Medicine (Internal Medicine)
	Clinical Medicine (Imaging and Nuclear Medicine)
	Clinical Medicine(Clinical Laboratory Diagnostics)
	Clinical Medicine (Surgery)
	Clinical Medicine (Rehabilitation Medicine Physical Therapy)

	Clinical Medicine (Anesthesiology)
	Clinical Medicine (Nursing)
	Internal Medicine (English-taught)

School/College/Dept.	Doctoral Specialty
School of Architecture	Architecture
	Urban Planning and design
	Landscape Architecture
School of Mechanical Engineering	Mechanical Engineering
School of Energy & Environment	Power Engineering & Engineering Thermophysics
	Environmental Science & Engineering
	Carbon Neutrality Science and Technology
School of Information Science & Engineering	Information & Communication Engineering
School of Civil Engineering	Mechanics
	Civil Engineering
	Civil Engineering (Civil Engineering & Management)
	Intelligent Construction and Operation & Maintenance
	Management Science and Engineering
School of Electronic Science & Engineering	Optical Engineering
	Electronic Science and Technology
School of Automation	Control Science and Engineering
School of Mathematics	Mathematics
School of Computer Science & Engineering	Computer Science & Technology
	Software Engineering
School of Biological Science and Medical Engineering	Biological & Medical Engineering
School of Physics	Physics
School of Economics and Management	Applied Economics
	Management Science & Engineering
	Business Administration
School of Material Science and Engineering	Material Science & Engineering
School of Electrical Engineering	Electrical Engineering
School of Transportation	Transportation Engineering
	Transportation Surveying and Information Technology
School of Arts	Art Theory

School of Chemistry & Chemical Engineering	Chemistry
	Chemical Engineering & Technology
School of Instrument Science & Engineering	Instrumental Science & Technology
School of Law	Law

Application Materials

1. Passport (The valid period must be more than **one year**, if you're currently in china, please provide the copies of the first page and the latest **VISA/resident permit page**);
2. Certificate of Highest Degree;
3. If you have not finished the bachelor's or master's program, you must provide the official pre-graduation document together with other application document; the latest date of obtaining the highest degree certificate is **September15, 2025**;
4. Official Transcript of Academic Records;
5. HSK 4 (**200 or above**) at least is needed for Chinese-taught Programs; applicants for medical and economic management majors are required to provide HSK certificates of level 5 or above.
6. If English is not the native language or official language, you are required to provide **TOEFL (80 or above)**, **IELTS (6.0 or above)** or **Duolingo (100 or above)** for English-taught program.
7. Two Recommendation Letters;
8. Letter of Acceptance from Supervisor (Compulsory for Doctoral Program Applicants, Master's Program Applicants of Medical and Economic & Management Majors);
9. Research Proposal no less than 800 words;
10. Certificate of Non-criminal Record;
11. Physical Examination Record within 6 months before the date of **Nov.15, 2024**;
12. Some programs may need other materials. (E.g. The applicant's portfolio is required for all programs in the School of Architecture)

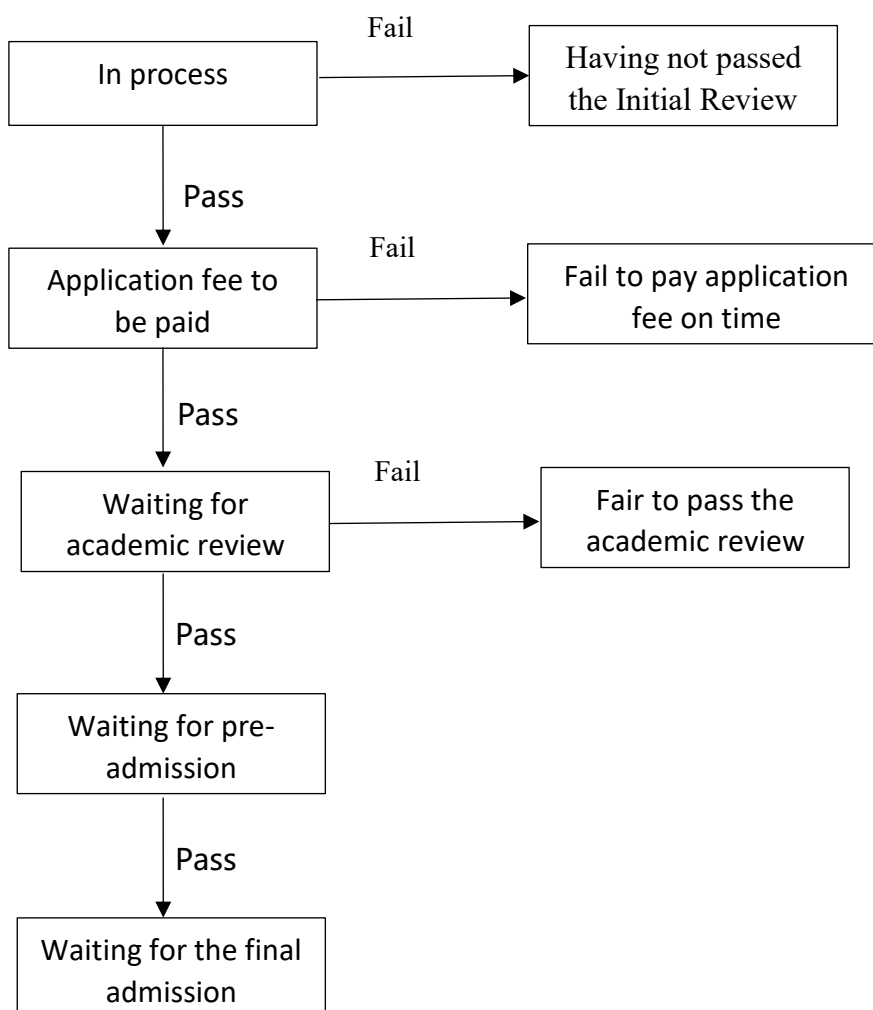
Note:

1. Please ensure the **completeness and accuracy** of the application information. All admission materials will be made based on the application information provided and will not be modified after completion.
2. Please ensure the **authenticity** of your application materials. If any untruthful content is found in the application materials, you will be disqualified and cannot apply to Southeast University again within 2 years;

3. The application documents must be **in Chinese or English**. Any documents in any other language must be attached with a notarized English or Chinese translation version;
4. Please fill in your **Chinese name** if you have one, it can't be changed after admission.
5. Please be sure the **email address** you write on the application system is correct, if you're admitted, all the admission documents will be sent to this email.

Application Procedure

1. Apply on the SEU online application system <http://fs.seu.edu.cn/>, select the Chinese Government Scholarship program (B) (Applicants are restricted to selecting only one program each, with repeated applications being disqualified from review).
2. After you complete the online application, you can log in <http://fs.seu.edu.cn/> to check your application status:



Admission

Step 1: For students who have passed all the reviews, we will provide the **pre-admission letters** to recommend you for the CSC scholarship by the end of March. (The application status on the system will be “Waiting for pre-admission”);

Step 2: Submit the pre-admission letter on the CSC online application system **according to the time specified in the letter**. Otherwise, you’ll be considered to give up the opportunity to be recommended;

(CSC online application system: <http://studyinchina.csc.edu.cn/>, The application code of Southeast University / the agency number is **10286**, the program type is **B**)

Step 3: The admission documents will be emailed to the address which you fill in the system after receiving the final decision from CSC.

Registration

1. The time for registration is from late August to early September, 2025. The exact time will be confirmed on the admission notice.
2. You can apply for student (X1) visa at the Chinese Embassy or Consulate in your country on the strength of the **admission notice and JW201 form** (both in electronic copies).
3. Please note that you must register within the stipulated time stated on the Admission Notice with the copy of the **Admission Notice and JW201 form**, the **original diploma, transcript and HSK/TOEFL/IELTS certificate**. Otherwise, you will be disqualified from enrollment.

Contact

Mailing address: College of International Students, Southeast University, 90 Chengxian Jie, Nanjing, China.

Post Code: 210018

Tel: 0086-25-83793022

Email: admission@seu.edu.cn

Fax: 0086-25-83792737

Website: <http://cis.seu.edu.cn>