

Application Information for Postgraduate Programs at SEU (2025)

Qualification

1. Applicants must be non-Chinese citizens;

2. Academic Background and age limit:

Applicants for a master's degree must have acquired their bachelor degrees.

Applicants for a PhD degree must have acquired their master degrees.

Application Period

Nov. 15, 2024– May 15, 2025

Tuition (in RMB)

	Master's	Ph.D's
Liberal Arts	18,000/year	28,000/year
Engineering	23,000/year	33,000/year
Medicine	30,000/year	50,000/year

English-taught Master's Programs: 30,000 – 40,000/year

Estimated Other Fees (in RMB): Application Fee of 400 (Application fee is irretrievable whether you are admitted or not), Insurance Fee of 800/year, 6000-9000/year for one occupancy in a room for two occupancies.

Programs

School/College/Dept.	Master's Specialty	Duration (years)
School of Transportation	Transportation Surveying and Information Technology	3
	Transportation Engineering	3
	Transportation Engineering (English-taught)	3
	Geotechnical Engineering	3
	Bridge and Tunnel Engineering	3
School of Humanities	Philosophy	3

	International Chinese Language Education (professional degree)	3
	Applied Psychology (Professional Degree)	3
	Psychology	3
	History of China	3
	Chinese Language and Literature	3
	Digital Sociology	3
	Sociology	3
	Social Work (Professional Degree)	3
	Applied Ethics (Professional Degree)	3
	Public Management	3
	Tourism Management	3
School of Instrument Science & Engineering	Instrumental Science & Technology	3
	Electronic and Information Engineering	3
	Navigation, Guidance and Control	3
School of Information Science & Engineering	Information & Communication Engineering	3
	Electronic and Information Engineering (English-taught)	3
	Technology of Electromagnetism & Microwaves	3
	Circuits & Systems	3
School of Public Health	Social Security	3
	Public Health (English-taught)	2
	Public Health and Preventive Medicine	3
School of Chemistry & Chemical Engineering	Chemical Engineering & Techniques	3
	Materials Physics & Chemistry	3
	Chemistry	3
Medical School	Clinical Medicine(Clinical Laboratory Diagnostics)	3
	Clinical Medicine (Internal Medicine)	3
	Clinical Medicine (Surgery)	3

	Clinical Medicine (Rehabilitation Medicine Physical Therapy)	3
	Clinical Medicine (Imaging and Nuclear Medicine)	3
	Clinical Medicine (Nursing)	3
	Clinical Medicine (Anesthesiology)	3
	Internal Medicine (English-taught)	3
	Basic Medicine	3
School of Civil Engineering	Management Science & Engineering	3
	Mechanics	3
	Mechanics (English-taught)	3
	Civil Engineering	3
	Civil Engineering (English-taught)	3
	Civil Engineering Construction and Management	3
	Municipal Engineering	3
	Intelligent Construction and Operation & Maintenance	3
School of Foreign Languages	Russian Language and Literature	3
	Linguistics and Applied Linguistics in Foreign Languages	3
	Intertranslation between Chinese and Japanese (Professional Degree)	3
	Japanese Language and Literature	3
	English Language and Literature	3
	Spanish Language and Literature	3
School of Architecture	Urban Planning	3
	Urban Planning (English-taught)	3
	Urban Planning (professional degree)	3
	Architecture	3
	Architecture (English-taught)	3
	Architecture (professional degree)	3

	Landscape Architecture (professional degree)	3
	Landscape Architecture (professional degree) (English-taught)	3
School of Mathematics	Mathematics	3
	System Science	3
	Statistics	3
School of Mechanical Engineering	Designing	3
	Machinery (Professional Degree)	3
	Mechanical Engineering	3
School of Material Science and Engineering	Material Science & Engineering	3
School of Law	Law	3
School of Physics	Physics	3
School of Life Science and Technology	Biology	3
	Biology (English-taught)	3
School of Biological Science and Medical Engineering	Education	3
	Biomedical Engineering	3
School of Electronic Science & Engineering	Optical Engineering	3
	Electronic Science & Technology	3
	Electronic Science & Technology (English-taught)	3
School of Electrical Engineering	Electrical Engineering	3
	Electrical Engineering	3
School of Economics & Management	Accounting	3
	Business Administration	3
	Management Science & Engineering	3
	International Trade (English-taught)	2
	Applied Economics	3
School of Cyber Science and Engineering	Cyberspace Security	3

School of Energy & Environment	Power Engineering & Engineering Thermophysics	3
	Power Engineering & Engineering Thermophysics (English-taught)	3
	Engineering of Heating, Gas, Ventilation & Air-conditioning	3
	Environmental Science & Engineering	3
	Environmental Science & Engineering (English-taught)	3
	Carbon Neutrality Science and Technology	3
School of Automation	Control Science and Engineering	3
	Control Science and Engineering (English-taught)	3
School of Arts	Arts	3
	Designing	3
School of Computer Science & Engineering	Intelligent Science and Technology	3
	Computer Science & Technology	3
	Software Engineering	3
School of Integrated circuit	Integrated Circuit Science and Engineering	3
School of Marxism	Marxist Theory	3

School/College/Dept.	Doctoral Specialty	Duration (years)
School of Transportation	Transportation Surveying and Information Technology	4
	Transportation Engineering	4
	Geotechnical Engineering	4
	Bridge and Tunnel Engineering	4
School of Humanities	Philosophy	4
	Digital Sociology	4
	Public Management	4
School of Instrument Science & Engineering	Instrumental Science & Technology	4
	Navigation, Guidance and Control	4

School of Information Science & Engineering	Information & Communication Engineering	4
	Technology of Electromagnetism & Microwaves	4
	Circuits & Systems	4
School of Public Health	Public Management	4
	Public Health and Preventive Medicine	4
School of Chemistry & Chemical Engineering	Chemical Engineering & Techniques	4
	Materials Physics & Chemistry	4
	Chemistry	4
Medical School	Clinical Laboratory Diagnostics	4
	Internal Medicine	4
	Surgery	4
	Obstetrics and Gynecology	4
	Rehabilitation Medicine Physical Therapy	4
	Imaging and Nuclear Medicine	4
	Neurology	4
	Geriatrics	4
	Otorhinolaryngology	4
	Oncology	4
	Intensive Medicine	4
	Anesthesiology	4
	Basic Medicine	4
School of Civil Engineering	Mechanics	4
	Civil Engineering	4
	Civil Engineering Construction and Management	4
	Municipal Engineering	4
	Intelligent Construction and Operation & Maintenance	4

	Management Science & Engineering	4
School of Foreign Languages	Foreign Language and Literature	4
School of Architecture	Urban Planning	4
	Architecture	4
	Landscape Architecture	4
School of Mathematics	Mathematics	4
	System Science	4
School of Mechanical Engineering	Mechanical Engineering	4
School of Material Science and Engineering	Material Science & Engineering	4
School of Law	Law	4
School of Physics	Physics	4
School of Life Science and Technology	Biology	4
School of Biological Science and Medical Engineering	Biomedical Engineering	4
School of Electronic Science & Engineering	Optical Engineering	4
	Electronic Science & Technology	4
School of Electrical Engineering	Electrical Engineering	4
School of Economics & Management	Business Administration	4
	Management Science & Engineering	4
	Financial Engineering	4
	Applied Economics	4
	Digital Economy and Management	4
	Finance	4
School of Cyber Science and Engineering	Cyberspace Security	4
School of Energy & Environment	Power Engineering & Engineering Thermophysics	4
	Engineering of Heating, Gas, Ventilation & Air-conditioning	4

	Environmental Science & Engineering	4
	Carbon Neutrality Science and Technology	4
School of Automation	Control Science and Engineering	4
School of Arts	Arts	4
	Designing	4
School of Computer Science & Engineering	Intelligent Science and Technology	4
	Computer Science & Technology	4
	Software Engineering	4
School of Integrated circuit	Integrated Circuit Science and Engineering	4
School of Marxism	Philosophy	4
	Public Management	4

Application Materials

1. Passport (The valid period must be more than **one year**, if you're currently in china, please provide the copies of the first page and the latest **VISA/resident permit page**);
2. Certificate of Highest Degree;
3. If you have not finished the bachelor's or master's program, you must provide the official pre-graduation document together with other application document; the latest date of obtaining the highest degree certificate is **September 15, 2025**;
4. Official Transcript of Academic Records;
5. HSK 4 (**200 or above**) at least is needed for Chinese-taught Programs, applicants for medical, economic management majors and International Chinese Language Education are required to provide HSK certificates of level 5 or above;
6. If English is not the native language or official language, you are required to provide **TOEFL (80 or above)**, **IELTS (6.0 or above)** or **Duolingo (100 or above)** for English-taught program;
7. Two Recommendation Letters;
8. Research Proposal no less than 800 words;
9. Letter of Acceptance from Supervisor (Compulsory for Doctoral Program Applicants, Master's Program Applicants of Medical and Economic & Management Majors)
10. Certificate of Non-criminal Record;

11. Physical Examination Record within 6 months before the date of Nov.15, 2024;

12. Some programs may need other materials. (E.g. Architecture programs asks for the applicant's portfolio)

Note:

1. Please ensure the **completeness and accuracy** of the application information. All admission materials will be made based on the application information provided and will not be modified after completion.

2. Please ensure the **authenticity** of your application materials. If any untruthful content is found in the application materials, you will be disqualified and cannot apply to Southeast University again within 2 years;

3. The application documents must be **in Chinese or English**. Any documents in any other languages must be attached with a notarized English or Chinese translation;

4. Please fill in your **Chinese name** if you have one, it can't be changed after admission.

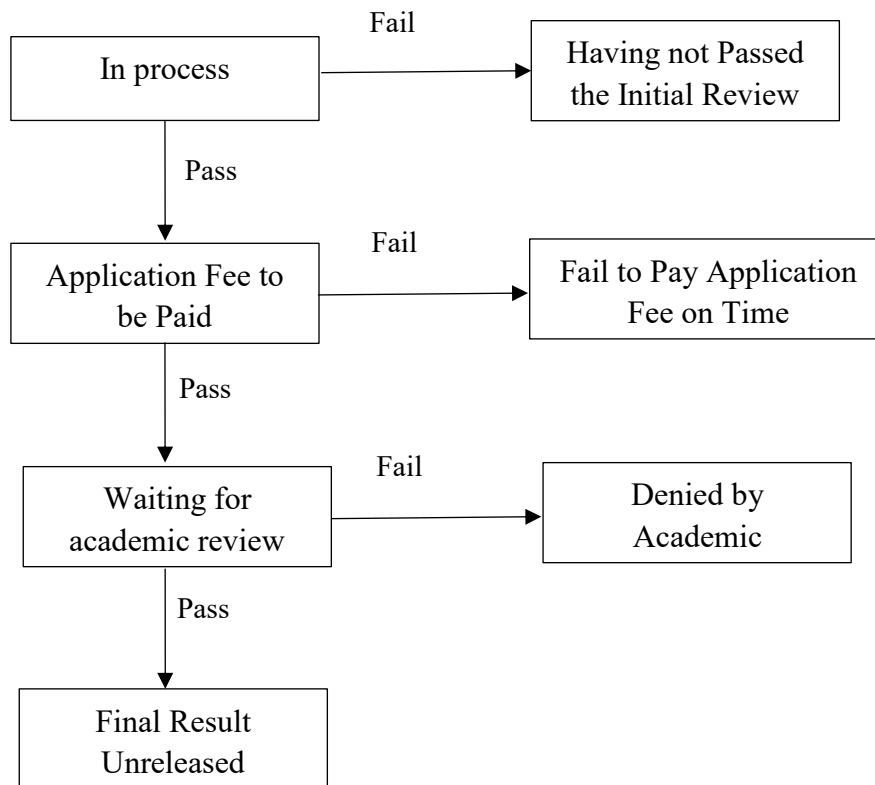
5. Please be sure the **email address** you write on the application system is correct, if you're admitted, all the admission documents will be sent to this email.

Application Procedure

1. Apply on the SEU online application system <http://fs.seu.edu.cn>. Select either the "Chinese Government Scholarship," the "Southeast University School Scholarship," or the "Self-financed" program, submit your application materials, and complete the online application. (**Applicants are restricted to selecting only one program each, with repeated applications being disqualified from review**);

2. If you want to apply for CSC scholarship, additionally you need to do the online application by <http://studyinchina.csc.edu.cn/>

3. After you complete the online application, you can log in <http://fs.seu.edu.cn/> to check your application status:



Admission

Step 1: For students who have passed all the reviews (the application status on the system will be “Final Result Unreleased”), you’ll be recommended for **Chinese Government Scholarship** or **other scholarship** according to the comprehensive selection;

Step 2: For self-financed program, please pay **the first year’s tuition fee and accommodation fee** to the University’s Bank Account. Submit the receipt on the online application system and email to admission@seu.edu.cn. While transferring fees to the university’s bank account, you must fill in **Student ID number**, applicant’s name and your passport number.

Step 3: The final result of the scholarship will be released on our college website by <http://cis.seu.edu.cn>;

Step 4: The admission documents will be emailed to the address which you fill in the system.

Registration

1. The time for registration is from late August to early September. The exact time will be confirmed on the admission notice.

2. You can apply for student (X1) visa at the Chinese Embassy or Consulate in your country on the strength of the **admission notice and JW201/JW202 form** (both in electronic copies).

3. Please note that you must register within the stipulated time stated on the Admission Notice with the copy of the **Admission Notice and JW202/JW201 form, the original receipt of the pre-paid tuition (for self-financed students)** together with **diploma, transcript and HSK/TOEFL/IELTS certificate**. Otherwise, you will be disqualified from enrollment.

Contact

Mailing address: College of International Students, Southeast University, 90 Chengxian Jie, Nanjing, China.

Post Code: 210018

Tel: 0086-25-83793022

Email: admission@seu.edu.cn

Fax: 0086-25-83792737

Website: <http://cis.seu.edu.cn>